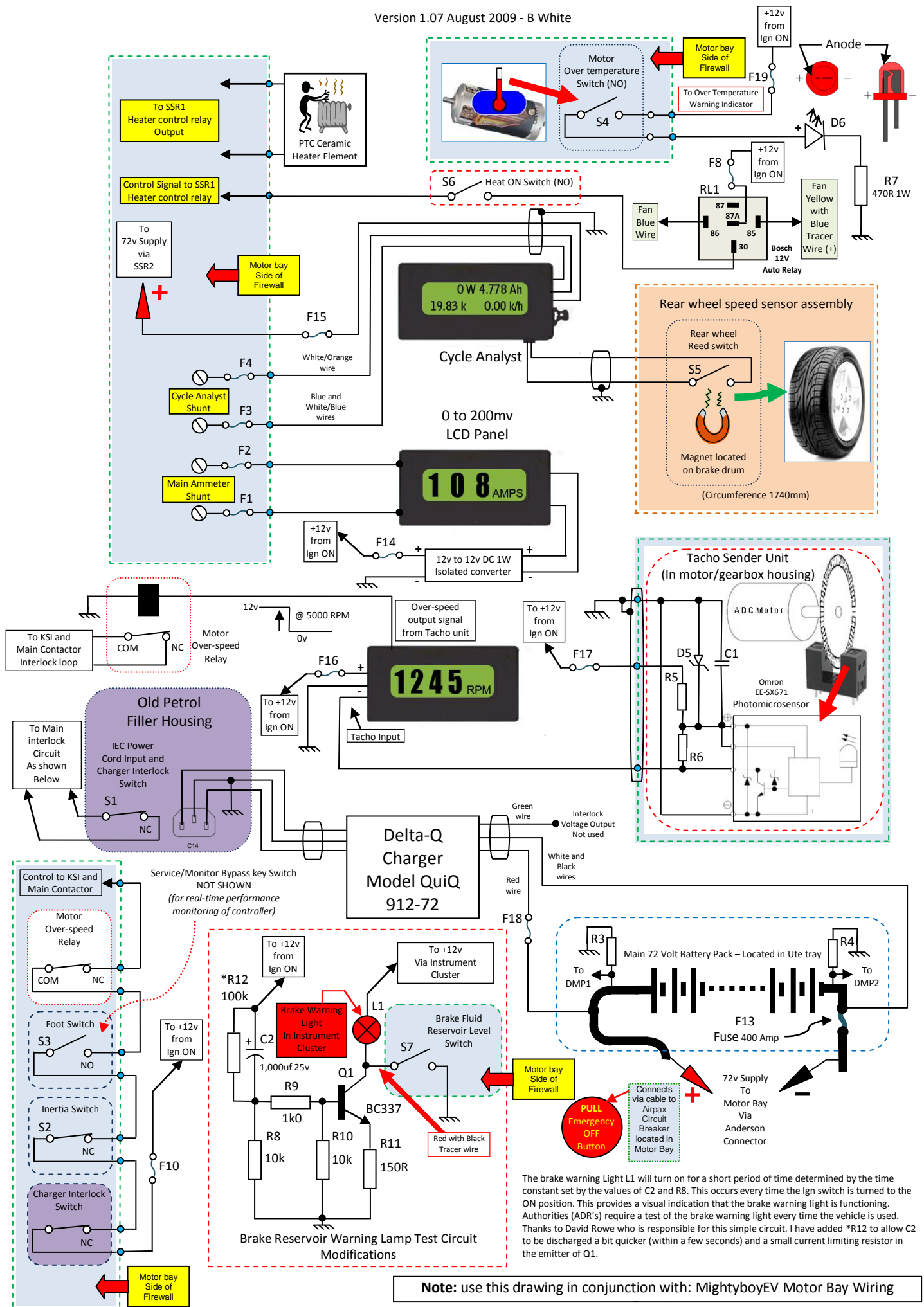


MightyboyEV Cabin Wiring

Version 1.07 August 2009 - B White



The brake warning Light L1 will turn on for a short period of time determined by the time constant set by the values of C2 and R8. This occurs every time the Ign switch is turned to the ON position. This provides a visual indication that the brake warning light is functioning. Authorities (ADR's) require a test of the brake warning light every time the vehicle is used. Thanks to David Rowe who is responsible for this simple circuit. I have added *R12 to allow C2 to be discharged a bit quicker (within a few seconds) and a small current limiting resistor in the emitter of Q1.

Note: use this drawing in conjunction with: MightyboyEV Motor Bay Wiring